



# Supporting Carers in Guernsey



GUERNSEY COMMUNITY  
FOUNDATION

*promoting effective philanthropy*



# Wayne Bulpitt Chair Guernsey Community Foundation



GUERNSEY COMMUNITY  
FOUNDATION

*promoting effective philanthropy*





# Agenda

1. Progress
2. Feedback from December meeting
3. Report Recommendations
4. Next steps



GUERNSEY COMMUNITY  
FOUNDATION

*promoting effective philanthropy*





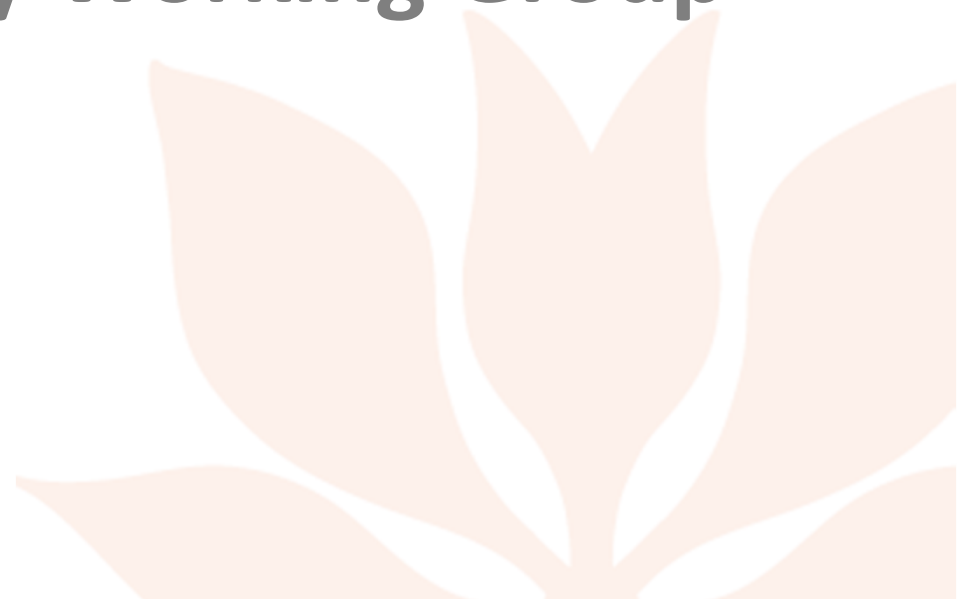
# Peter Harwood Chair

## Carers Guernsey Working Group



GUERNSEY COMMUNITY  
FOUNDATION

*promoting effective philanthropy*



# Carers Working Group

- Peter Harwood – ex Deputy, previous Chair of SLAWS working group
- Julie Bulpitt – volunteer and carer
- Caroline Mullins – States Disability Officer
- Alastair Bisson – Director, Guernsey Community Foundation
- Sadie Siviter de Paucar – Development Manager, Guernsey Community Foundation

Andrew Carey – Carers Representative, Guernsey Disability Alliance working group member during 2016 (now stood down from GDA role)



GUERNSEY COMMUNITY  
FOUNDATION

*promoting effective philanthropy*



# Methodology:

- Meetings with stakeholders
- Desktop research
- Phone interviews



GUERNSEY COMMUNITY  
FOUNDATION

*promoting effective philanthropy*



# Stakeholders Consulted

- Carers Coming Together
- Alzheimer's Society
- Alzheimer's Association
- Wigwam
- Autism Guernsey
- National Autistic Society
- Young People Guernsey / the Hub
- Health Information Guernsey
- Guernsey Disability Alliance
- Ageing Well in the Bailiwick
- Parent Carer Council
- Age Concern
- Guernsey Mind
- St John
- Care Managers' Association
- Guernsey Voluntary Service
- St John's Residential Home
- Drug Concern
- Citizens Advice Bureau
- Connie's Carers
- Individual carers
- Committee for Employment & Social Security
- Committee for Health & Social Care
- Policy & Resources Committee



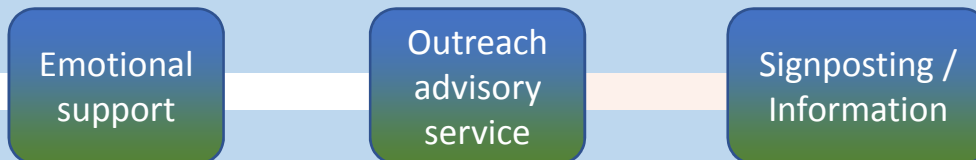
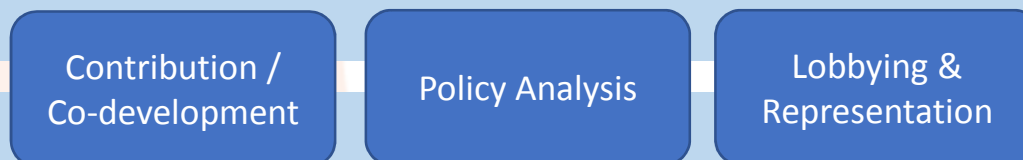
GUERNSEY COMMUNITY  
FOUNDATION

*promoting effective philanthropy*

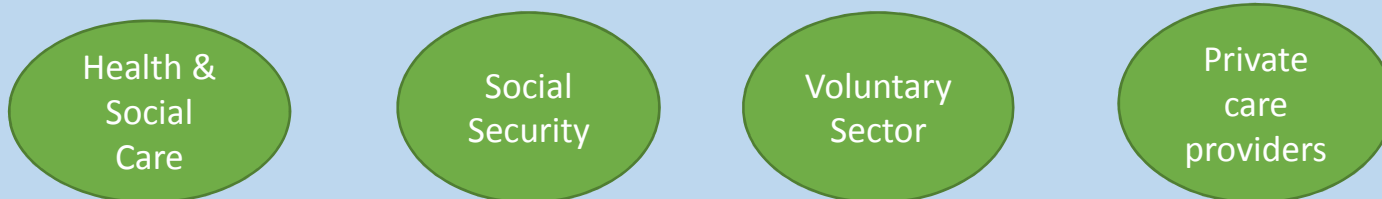
INFLUENCE



COORDINATE



PROVIDE





# Feedback from Stakeholder meeting

## 1<sup>st</sup> December 2016

- Unanimous support for the need and creation of ‘Carers Guernsey’
- Model for Carers Guernsey - most participants favoured the combination of voice for carers plus service provision.
- Carers Guernsey should act as a key stakeholder in the development of the proposed carer’s strategy within the Supported Living and Ageing Well Strategy (SLAWS).



GUERNSEY COMMUNITY  
FOUNDATION

*promoting effective philanthropy*

# Feedback from Stakeholder meeting

## 1<sup>st</sup> December 2016

- Evidence from research shows that most stakeholders believe there is an immediate gap or need for emotional support for carers as well as a voice/representation side which would feed into the development of carer's strategy.
- The voluntary sector can do more to support carers
- Key issues that Carers Guernsey will need to focus on: identifying carers (including young carers); respite; access to accurate information and signposting; carers assessments; improving communications between GPs and carers; financing of care.



GUERNSEY COMMUNITY  
FOUNDATION

*promoting effective philanthropy*

# Report Recommendations

1. To form an umbrella organisation, 'Carers Guernsey' with the following objectives:

- To give carers a voice in matters that affect them
- To provide emotional and practical support to carers of all ages and across all conditions
- To provide a central service for information and advice to carers
- To assist in the identification of and sourcing of services from various providers to all carers



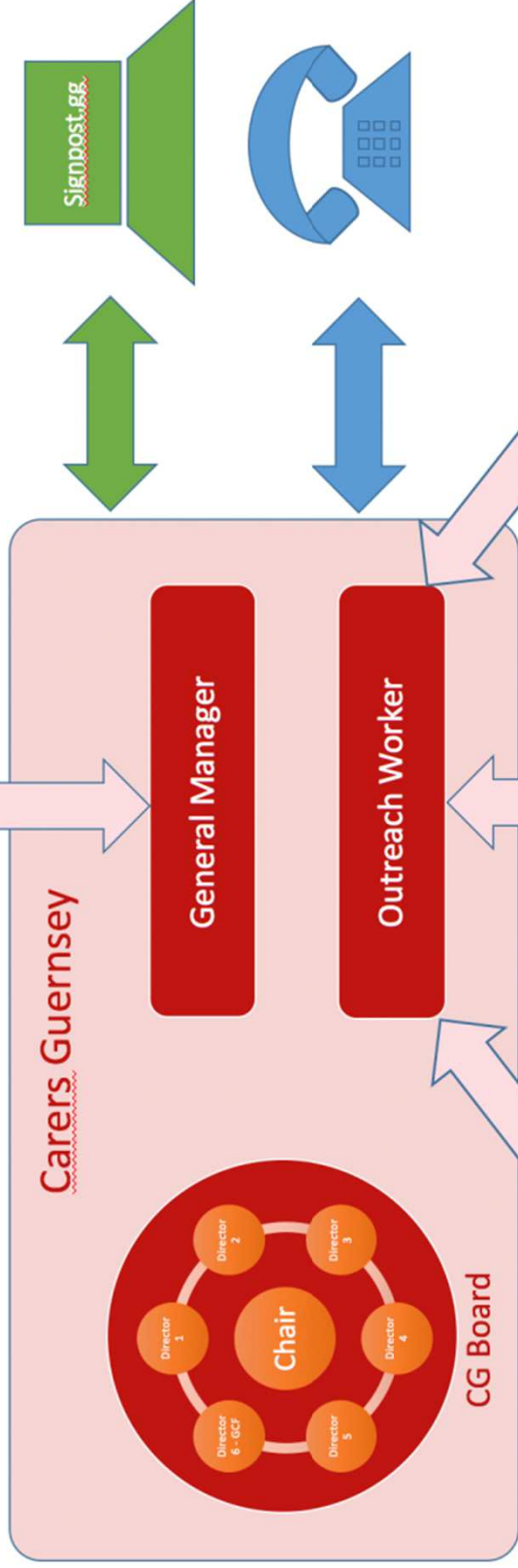
GUERNSEY COMMUNITY  
FOUNDATION

*promoting effective philanthropy*

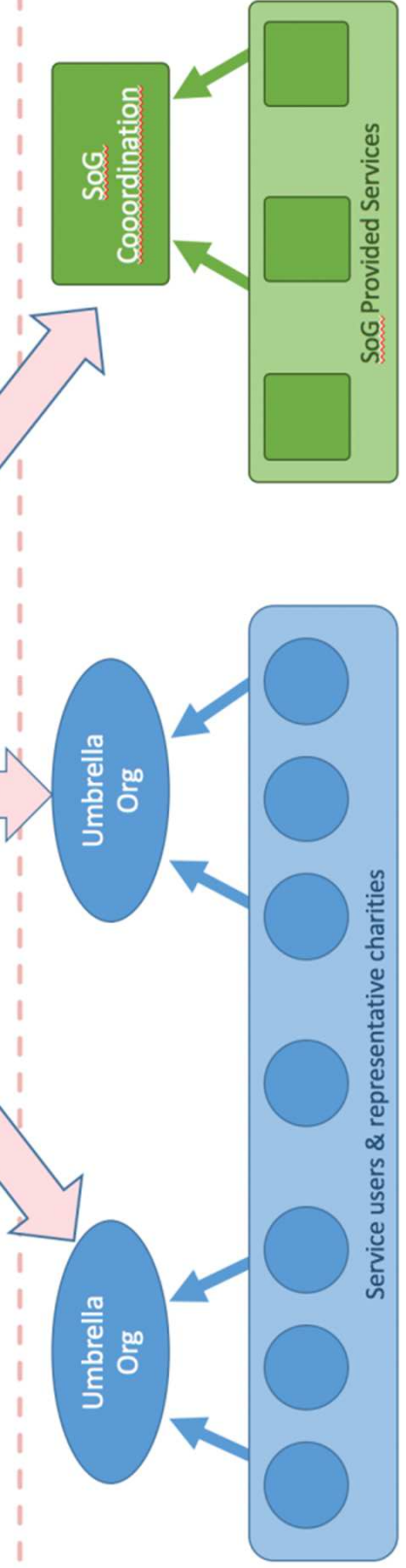
Policy & Legislation



Service Management



Service Demand & Supply



# Report Recommendations

2. To source sufficient funds to allow for the setup and operation of Carers Guernsey for a three year period.

3. To recruit an initial team of two staff:

- One General Manager
- One Outreach Worker / Case Manager



GUERNSEY COMMUNITY  
FOUNDATION

*promoting effective philanthropy*

# Report Recommendations

4. For the GCF to support Carers Guernsey in:
  - the creation of a Board to run Carers Guernsey, including a GCF representative for an initial two years
  - the sourcing of the IT systems required to operate
  - the sourcing of leased premises, potentially from the proposed community centre hub being proposed by HSC
  
5. To use Carers Guernsey as a vehicle to provide input into the development of the States Carers Strategy within SLAWS.



GUERNSEY COMMUNITY  
FOUNDATION

*promoting effective philanthropy*

# Report Recommendations

## Initial services:

- Emotional support sessions
- Carer peer support and former carer peer support
- Ring round service
- Support in the completion of forms
- Carer training
- Use of technology as a means of facilitating contact e.g. iPad library (containing carer info + Facetime for Ring Rounds)
- Assistance with sourcing respite breaks and other care
- Potential further services:
  - Carers assessments, or support of a States process
  - A carers register



GUERNSEY COMMUNITY  
FOUNDATION

*promoting effective philanthropy*

# Next Steps

- Establishment of LBG
- Initial Board of Directors
- Implementation Steering Group
- Fundraising
- Detailed audit of Voluntary Sector and States services
- On-going discussions with States of Guernsey on development of Carers Strategy



GUERNSEY COMMUNITY  
FOUNDATION

*promoting effective philanthropy*





# Questions



GUERNSEY COMMUNITY  
FOUNDATION

*promoting effective philanthropy*





# Deputy Jane Stephens Policy & Resources Committee



GUERNSEY COMMUNITY  
FOUNDATION

*promoting effective philanthropy*





# Wayne Bulpitt Chair

## Guernsey Community Foundation



GUERNSEY COMMUNITY  
FOUNDATION

*promoting effective philanthropy*



# Guernsey Community Foundation

Contact details:

748056

[sadie@foundation.gg](mailto:sadie@foundation.gg)



GUERNSEY COMMUNITY  
FOUNDATION

*promoting effective philanthropy*